



ADAPT ISLAND

COPII
Summary

European Commission

08/10/2020 and 18/12/2020
LIFE18/CCA/FR/001184



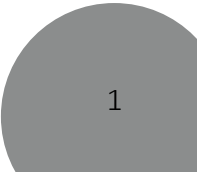
Contents

- 1. Introduction..... 2
 - 1.1. The LIFE Adapt'Island..... 2
 - 1.2. The added value of a steering committee 2
- 2. COPIL n°1 of 16.10.2020..... 2
 - 2.1. Agenda..... 2
 - 2.2. The project..... 2
 - 2.3. Ongoing actions and planned orientations..... 3
 - 2.4. Agenda COPIL n°2 of 08/12/2020 4
 - 2.5. Project presentation and its partnership framework 4
 - 2.5.1. Documents generated 4
 - 2.6. Publics tenders 5
 - 2.7. Partenariats 5
 - 2.8. Monitoring, April 2019..... 5



08/10/2020 & 18/12/2020

LIFE18/CCA/FR/001184



1. Introduction

1.1. The LIFE Adapt'Island

The coastal zone is subject to numerous anthropic pressures to the detriment of natural areas (development, urbanization, tourist pressure, etc.). In addition to this, there are the more general upheavals caused by climate change, including the rise in sea level and the increase in the frequency and intensity of extreme weather events. In addition, the consequences of climate change generally exacerbate the problems that coastal areas are already facing with disastrous socio-economic consequences.

As a result of the development project called "Port New Generation" and a change in status in 2012, the GPMG, which became a manager of natural areas, implemented in 2016 a major environmental management plan: Cáyoli. In 2019, the Life Adapt'Island project is therefore a continuation of the Cáyoli program and reinforces the GPMG's commitment to environmental management on a regional scale, beyond the natural areas under its management.

1.2. The added value of a steering committee

The steering committee is composed of 4 technical reviewers who are

- - Ms. SAINT-CHARLES - Manager of Institutional Relations & Public Policy: Support in the development of partnerships
- - M. PLUMAIN - Finance Manager: Support in the financial monitoring of the project.
- - M. EURY - Assistant Director of Development: Support in the technical aspect of the project.
- - M. CHALUS - Director General (DG): Support on the general supervision of the project.

Two Steering Committee meetings were held in 2020. The first one, held in October 2020, presented the framework of the LIFE Adapt'Island project (objectives, partnership). The second COPIL of December 2020 focused on the details of implementation and future actions.

2. COPIL n°1 of 16.10.2020

2.1. Agenda

- Presentation of the partnership framework and stakeholders
- Details of the actions, objectives, and phases of the project
- Presentation of ongoing actions and planned orientations

2.2. The project

Partnership framework and stakeholders

The LIFE Adapt'Island project, coordinated by the GPMG, is co-financed by the European Union through LIFE funds. Pilot4Dec and URAPEG are the two partners of the project. Moreover, the project is supported by the University of the West Indies, the Guadeloupe Region, Caribea initiative and the ONF.

Issues and objectives

The Life Adapt'Island project aims to adapt to climate change by developing nature-based solutions to reduce vulnerability to the risks inherent in the coastal zone. This project is directly in line with the institution's strategic project under axis 10 entitled "Adapting the port to climate change".

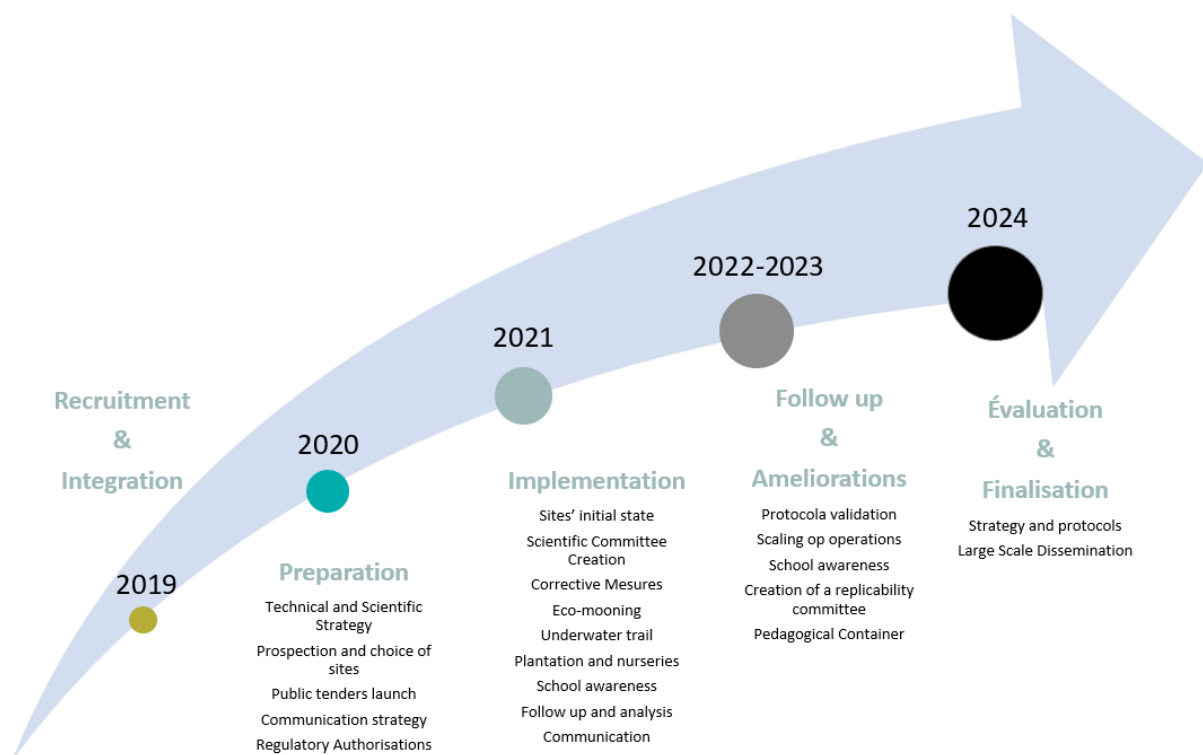
Nature-based solutions can be broken down into three types of actions that are generally combined according to the International Union for Conservation of Nature:

- Preservation of functional, ecologically healthy ecosystems;
- Improving the management of ecosystems for sustainable use by human activities;
- The restoration of degraded ecosystems or the creation of new ecosystems.

Three ecosystems have been targeted: Coral Reefs, Seagrass Beds and Coastal Forests.

The main objectives are the following: 80,000 m² of mangroves (10,000 seedlings), 75,000 m² of seagrass beds, 45,000 m² of corals (15,000 specimens), the publication of 8 scientific article

Project stages



2.3. Ongoing actions and planned orientations

Technical and Scientific Strategy

The technical and scientific strategy has been drafted and is being reviewed by independent experts.

Site Selection Report

The strategy for selecting the project target sites was established following a literature review of the GPMG studies and a field survey of areas of interest to the LIFE project.

We want to promote natural regeneration by reducing the pressures on the sites.

Rehabilitation operation

This component is based on the rehabilitation of artificial sites identified as natural spaces. Three major axes are addressed: the excavation of the embankments, the depollution, the management of the EVEC.

An inventory of the site and geotechnical surveys have been carried out. The next step is the launch of a purchase order contract for the realization of rehabilitation operations.

Eco-moistening

The creation of an anchorage and light equipment zone (ZMEL) will make it possible to offer quality services to boaters, to protect benthic marine ecosystems and to reduce the risk of wrecks.

An AVP has been completed in 2019. The host site is the bay of Point-à-Pitre north of the Cochons Islet. The prototypes are being stabilized.

2.4. Agenda COPIL n°2 of 08/12/2020

- Presentation of the project and its partnership framework
- Actions in progress and planned orientations
- Public contracts
- Partnerships
- Evaluation of the project

2.5. Project presentation and its partnership framework

Focus on Pilot4Dev and its role in the project

PILOT4DEV is an independent initiative that connects actors, notably academic and institutional, with pilot actions in the fields of Climate, Governance, Resilience to climate events and more generally in the field of sustainable development objectives.

The roles of Pilot4Dev within the project are:

- In charge of Action E5: Dissemination/Communication at European level
- To be a support to the project management
- Valorization, promotion and support to the results
- Supporting the replication to other territories (E4) or to other projects

The GPMG will implement activities in connection with or for the LIFE Adapt'Island project. Its teams will provide technical support to the LIFE Adapt'Island team. Actions en cours et orientations envisagés

2.5.1. Documents generated

The technical and scientific strategy is essential for the success of the project. It presents the implementation of the actions and the new orientations envisaged, such as encouraging the

natural regeneration of the environments and diversifying the species to be implanted. This document is evaluated by independent experts.

A Scientific Committee composed of international experts will be created. The presentation of the project to the prospective members will be made on November 16, 2020. The first meeting of the board is scheduled for January 29, 2021.

The site selection report is based on a bibliographical analysis of the GPMG studies and field surveys. This report allows a better knowledge of the terrestrial and marine port area. To date, the field survey is still in progress. The prospective sites will be subjected to more precise diagnoses prior to implementation.

The first collection report revises the objectives for the collection of biological material. The operations have been strongly impacted by the health crisis. This report stabilizes the collection strategy and takes into account the integration of a greater number of species.

For the coastal tree ecosystems, the collection will be carried out according to the fruiting periods of the target species and the needs per site. These operations can be associated with awareness operations for schoolchildren. In addition, in order to achieve the objectives of LIFE, cultivation contracts with nurserymen will be established.

The increase of the production within the coral farm will be ensured by the taking of coral fragments of opportunity and the collection of gametes of corals. For the sea grass beds, the installation of eco-moorings will promote natural regeneration.

2.6. Publics tenders

A large number of public tenders will be launched in order to meet the objectives of the project. These different contracts will be a technical support for the actions of maintenance of the coral farms, collection of biological material, rehabilitation and restoration. At the same time, contracts for communication and for the creation of a submarine trail will be planned.

2.7. Partenariats

An "Environment and Sustainable Development" convention with the rectorate and other environmental actors in Guadeloupe was signed.

Awareness actions were undertaken with the initiative "Sea Ambassadors. Moreover, a preliminary study on the feasibility of the underwater path has been initiated.

2.8. Monitoring, April 2019

Given the health context, the first monitoring took place by videoconference. A letter from CINEA reported the positive points of the project and highlighted the difficulties encountered at the beginning of the project. This letter allowed the validation of proposed orientations such as the monitoring of coral bleaching, the diversification of species to be implanted, and the continuation of the "Sea Ambassadors" initiative. A response to this letter has been prepared. The following face-to-face evaluation was later on scheduled for March 22, 2021.